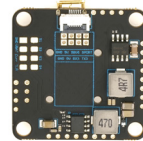
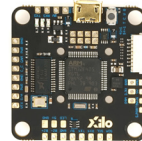


# Xilo STAX



## F4 Flight Controller XILO

### F405 / 5VBEC / Camera control / VTX Power Control / 6x UART

MCU: F405  
 IMU: BMI270  
 OSD: AB7456  
 UARTs: 6  
 PWM output: 4  
 I2C: 1

VBAT input: 8-30V  
 BEC: 5V 2A / 10V 2A

Smartaudio / Tramp VTX Control  
 Camera Control  
 LC Filter  
 Beeper  
 WS2812b LED Strip  
 3x Receiver direct mount

### Resources:

Function	Solder Pad Silk screen	Resources	MCU Pin	Notes
SBUS	SBUS	RX 1	PA10	Build-in inverter
DSM2	DSM	TX 1	PA9	CLI serialrx_halfduplex set to ON
Smart Audio VTX	S/A	TX 5	PC12	
Smartport/F.port	S.PORT	UART 6	PC6/7	Build-in inverters
ESC Telemetry	TLM	RX 2	PA3	
Camera Control	C_C		PA8	
SDA	SDA	I2C1_SDA	PB9	Pull-up needed
SCL	SCL	I2C1_SCL	PB8	Pull-up needed
GPS	RX4/TX4	UART 4	PA0/1	
WS2812B LED	LED		PA15	
Buzzer	Bz-/Bz+		PC5	

# Layout / Pinmap

