

1. First please copy this file into the computer.

LiteRadio_2_SE Updata.rar : <https://we.tl/t-6HKCfxKzKX>

2. After unzipping to the local, enter the folder to find LiteRadio_2_SE_Updata.exe and double-click to open the software.

libssl-1_1.dll	2020/9/17 10:29	应用程序扩展	674 KB
LiteRadio.ico	2020/9/28 19:05	ICO 图片文件	93 KB
LiteRadio.png	2020/9/28 19:05	PNG 图片文件	167 KB
LiteRadio_2_SE_Updata.exe	2020/10/23 10:03	应用程序	2,326 KB
LiteRadio1_companion.exe.manifest	2020/10/23 10:03	MANIFEST 文件	2 KB
MSVCP140.dll	2020/9/17 10:29	应用程序扩展	577 KB
MSVCP140_1.dll	2020/9/17 10:29	应用程序扩展	31 KB

3. Download STM32 VCP Driver like the pictures.

STM32 VCP Driver.rar : <https://we.tl/t-7h32Kdt2J2>

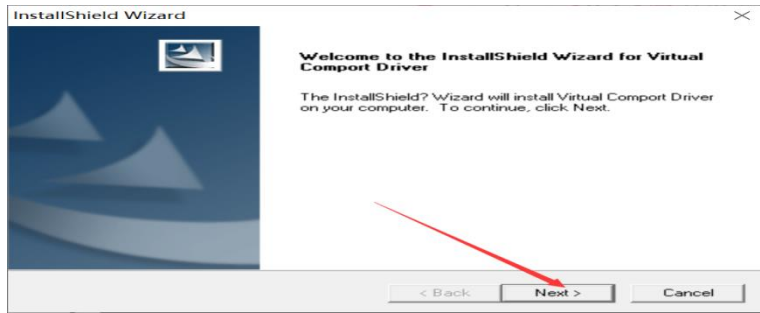
名称	修改日期	类型	大小
VCP_V1.5.0_Setup_W7_W10_x64_64bits.exe	2017/12/6 3:38	应用程序	
VCP_V1.5.0_Setup_W7_W10_x86_32bits.exe	2017/12/6 3:40	应用程序	
VCP_V1.5.0_Setup_W8_x64_64bits.exe	2017/12/6 3:25	应用程序	
VCP_V1.5.0_Setup_W8_x86_32bits.exe	2017/12/6 3:32	应用程序	

win7/win10 64位系统安装

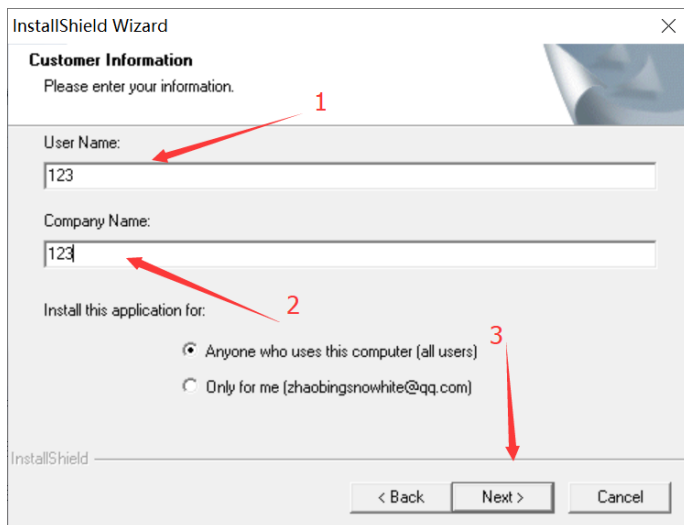
win7/win10 32位系统安装

4. Choose the corresponding driver software according to your own system version:

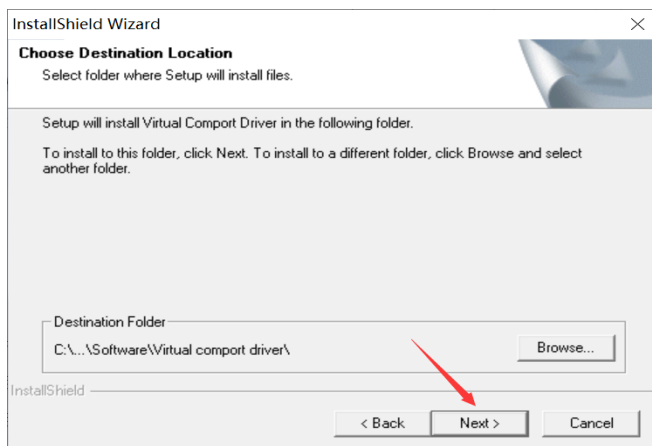
5. Double-click the installation package to start the installation, and click Next.



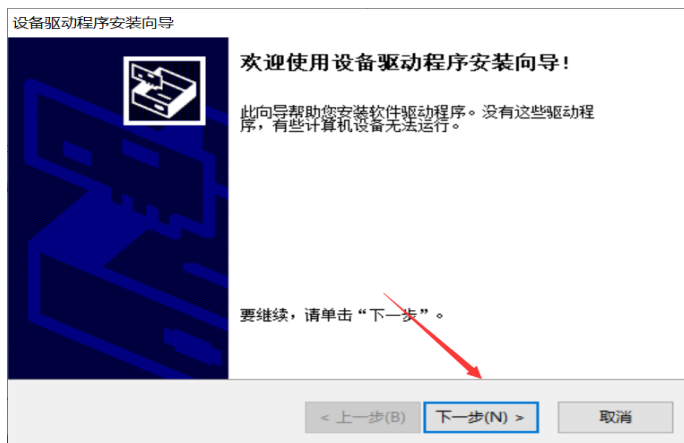
6. put anything on User Name and company name Software updated completed.



7. Select the installation path and click Next.



8. The driver installation wizard pops up, click Next.



9. finish installation

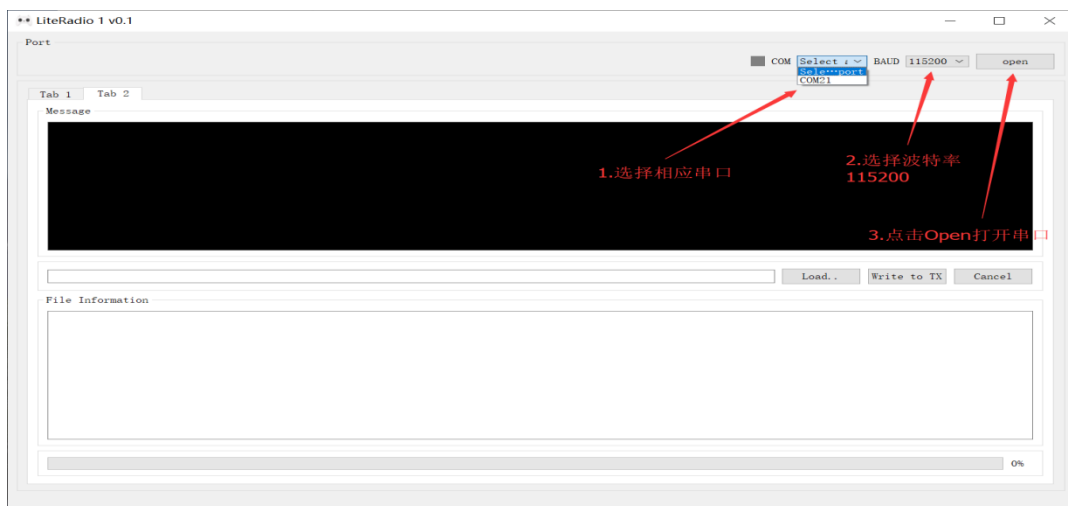
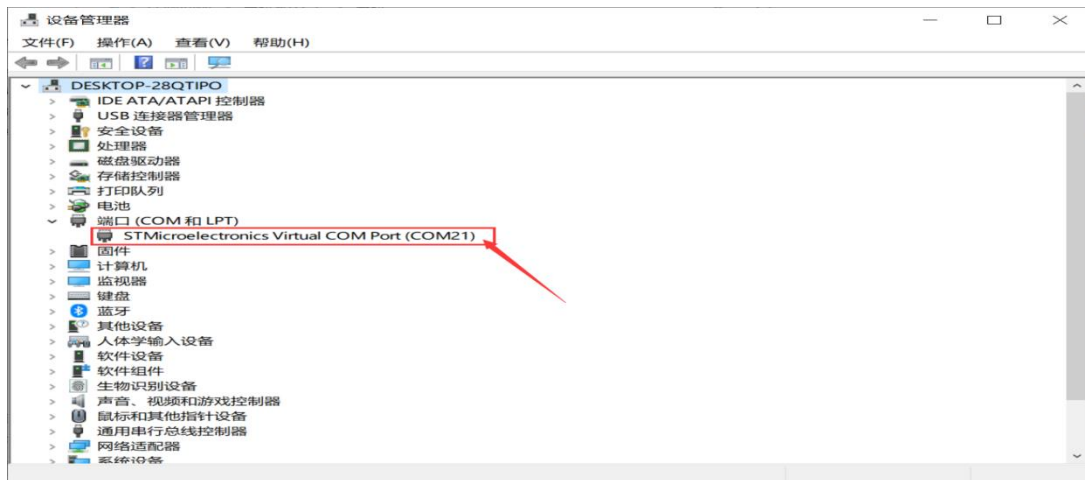


10. Press and hold the SETUP button on the back of the remote control, and then press the power button to turn on. After hearing the (DO RI MI) power-on prompt, enter the firmware update mode and release the SETUP button and the power button.

11. Connect the computer and the remote control with a USB cable

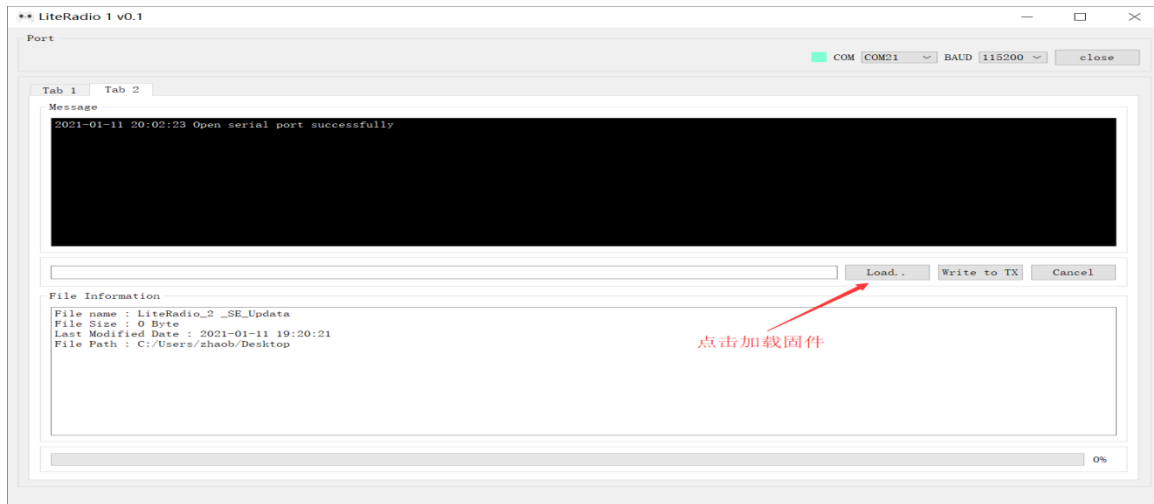
12. Select the corresponding serial port and baud rate, and click the open button, then click Load to load the firmware;

If you are not sure which serial port the remote control is connected to, you can enter the device manager to view.



13. load the corresponding firmware: LiteRadio 2 SE Firmware

LiteRadio_2_SE_Frsky_1_9_Mode 2.bin: <https://we.tl/t-RV3mEP9bUa>



14. After the firmware is loaded, click Write to TX to burn the firmware into the remote control. When the progress bar below reaches 100%, the firmware update is complete.

